

BCITO GATEWAY PROGRAMMES



2019 Guide for Schools



BCITO building people

BCITO Background

The Building and Construction Industry Training Organisation (BCITO) is the standard-setting body for the building and construction industry. We are responsible for working with industry to develop construction-related qualifications and manage industry training for those qualifications through apprenticeships. We support over 10,000 apprentices across a number of industry sectors, including:

Architectural aluminium joinery	Brick and block laying
Carpentry	Concrete
Exterior plastering	Flooring
Frame and truss fabrication	Glass and glazing
Interior systems	Joinery
Kitchen and bathroom design	Painting and decorating
Stonemasonry	Tiling

More information on each of these can be found at: <https://bcito.org.nz/apprenticeships/careers/>

The BCITO team is committed to working with the industry to maintain high standards in trade training. An essential part of this involves working with schools to ensure that we get the right students coming out of school and entering the industry as apprentices. BCITO wants to:

- develop strong relationships with local schools, students, and employers
- provide support for quality learning experiences
- introduce schools and students to the BCITO and the range of training programmes available, including apprenticeships
- promote the BCITO as the primary contact for training in the building and construction industry
- provide 'up to the minute' information to students and school leavers on training opportunities and career pathways.

What is 'Gateway'?

Gateway is a government initiative to provide structured workplace learning programmes for senior (years 11 and above) secondary school students. Being able to learn on the job helps equip students with skills needed for work.

Gateway provides employers with an opportunity to work with their local school and contribute to engaging and supporting youth into their industry.

Gateway provides students with opportunities to explore post-school options while still at school, to gain and apply skills in a workplace context, and to engage with people working in the industry. BCITO wholeheartedly supports the Tertiary Education Commission's requirement that those receiving Gateway funding have the workplace learning integrated with each student's wider course of study.

Who benefits from a BCITO Gateway support package?

Students

Students who have a genuine interest in exploring a career in the building and construction industry should consider doing Gateway using a BCITO Gateway package. Please remember, however, that most occupations in the industry can be physically challenging and be in a potentially hazardous environment. All working through a BCITO Gateway package should therefore also:

- have sufficient maturity
- be physically fit
- have good hand-eye coordination
- be able to follow instructions
- have appropriate literacy and numeracy skills.

Students' work placements must be of sufficient duration to allow them time to develop the skill and knowledge levels required of the relevant unit standards. They cannot complete the Gateway programme unless they can meet the same standards expected of those who gain them throughout the year as part of a subject.

If you are unsure if a student is suitable, please discuss with your BCITO Training Advisor.

Employers

Gateway students experience work in your business. They must be supervised and a suitably qualified person must be able to provide them with guidance and help with what to do. The student's supervisor (who doesn't have to be the employer) will be asked to verify that the student's work diary is correct and to attest to observing certain behaviours and activities.

Students will ideally work with the one employer throughout their programme.

Your BCITO Training Advisor will talk you through what opportunities your Gateway student needs and support you to provide them.

Learning Support for Students

In any BCITO apprenticeship, learning is always supported by a person who has the appropriate trade knowledge and experience. It is important that the same support is in place for students doing a BCITO Gateway programme. Day to day learning support could be provided by any of the following:

- employers
- retired tradesperson
- appropriately qualified technology teacher.

Some BCITO Gateway students may also be studying Technology. Similarly, some schools may have their Technology teacher assisting Gateway students with their learning. It is essential that all students involved in Gateway programmes receive the required support, irrespective of other subjects being studied or the teaching staff directly involved.

The BCITO needs to be assured that students' learning is appropriate and that assessment judgements are made by suitably qualified and experienced assessors.

Assessment support for Gateway Co-ordinators

BCITO Training Advisors visit at least twice a year to discuss progress with the employer, student, and Gateway Co-ordinators, and to perform assessments when appropriate. In between visits, Training Advisors are available via phone and email for support and guidance.

Gateway Support Packages

BCITO has two packages to support students doing the Gateway programme, both of which are about 'real skills, real work, real life'. BCITO's Gateway packages are designed to enhance and focus the learning that will occur throughout the student's industry placement.

The packages consist of Level 1, 2 and 3 Building, Construction and Allied Trade Skills (BCATS) unit standards. Because students studying Technology will also be working toward these BCATS unit standards, close working relationships between Gateway Co-ordinators and Technology teachers are encouraged.

1. BCITO Gateway

The Level 1 and 2 BCATS unit standards within **BCITO Gateway** provide a mixture of theory and practical learning. Progression toward the theory-based standards 24355 and 24354 should not be completed without an appropriate practical project to contextualise the theoretical learning.

BCITO Gateway is suitable for students with the maturity to benefit from experiences gained in a workplace and who already have a familiarity with materials, tools, equipment and machinery likely to be encountered in their work placements.

BCITO Gateway				
US #	Title	Version*	Level	Credits
25319 25323 25325 25328 25329 25330	Demonstrate knowledge of the [] industry within a BCATS environment - Carpentry - Exterior plastering - Floor and wall tiling - Glass - Interior systems - Joinery	2	2	Maximum of 2 of these standards = 4 credits
12927	Identify, select, maintain and use hand tools for BCATS projects	4	2	6
24355	Demonstrate knowledge of construction and manufacturing materials used in BCATS projects	2	1	4
24354	Demonstrate knowledge of and apply safe working practices in a BCATS environment	2	2	4
24357	Receive instructions and communicate information in relation to BCATS projects	2	2	4
* Please note that the version 3.0 on the resources refers to the version of the BCITO resources, not the unit standard.				22 credits

2. BCITO Gateway (Advanced)

BCITO Gateway (Advanced) is suitable for students who have already completed Level 2 BCATS unit standards through Technology or **BCITO Gateway**, or who can demonstrate equivalent skills, knowledge, and behaviours. Success is dependent on students already having a good base from which to grow these.

- **BCITO Gateway (Advanced)** focuses on students doing work on their industry placement that meets the Stage 3 BCATS project criteria. Co-ordinators and students must be sufficiently prepared for the level of independent research, learning, and recording required, and allow for enough time on the tools to gain the skills and knowledge needed.

BCITO Gateway (Advanced)				
US #	Title	Version	Level	Credits
Core				
29677	Follow safe workplace practices, and contribute to a health and safety culture, in a BCATS environment	1	3	2
29680	Communicate and work collaboratively in a Stage 3 BCATS project	1	3	5
29681	Measure and calculate for a Stage 3 BCATS project	1	3	3
10 credits				
Options - choose a minimum of 10 credits from those below				
29678	Demonstrate knowledge of, select, and use materials for a Stage 3 BCATS project	1	3	4
29679	Develop and use BCATS project documentation for a Stage 3 BCATS project	1	3	8
29682	Select, use, and maintain tools, equipment and machinery for a Stage 3 BCATS project	1	3	4
29683	Incorporate other building, construction and allied trades into a Stage 3 BCATS project schedule	1	3	2
29684	Undertake a Stage 3 BCATS project	1	3	12
Core plus options = 20 credits (minimum)				

Gateway Services and Fees

The BCITO offers the following services:

- signing your Gateway students into a BCITO Gateway Support and Assessment Memorandum of Understanding (MoU)
- access to teaching and learning resources
- assessing against unit standards
- assisting you in getting to know your local industry employers
- helping students make career decisions
- introducing students to prospective employers when they leave school
- providing appropriate building and construction industry information for careers advisors.

The cost for these services is the same regardless of whether the school chooses to use BCITO as an assessor. It is a contribution to the costs associated with BCITO staff supporting Co-ordinators, students, and employers engaged in the programme.

Gateway Packages	Fee per student (incl GST)
BCITO Gateway	\$500.00
BCITO Gateway (Advanced)	\$500.00

Gateway Administration

Schools are requested to sign and return a MoU with the BCITO. The BCITO Gateway Support and Assessment MoU sets out each party's obligations when supporting a student in the structured workplace learning and assessment programme.

The BCITO Gateway Support and Assessment MoU is available from your local BCITO Business Development Advisor or Training Advisor. The MoU:

- indicates the assessment option your school has chosen
- provides the required detail for each BCITO Gateway student
- provides moderation and reporting requirements.

The school will be invoiced for the package(s) indicated in the MoU.

Assessment and moderation

Schools can assess against the unit standards themselves or avail themselves of a BCITO assessor.

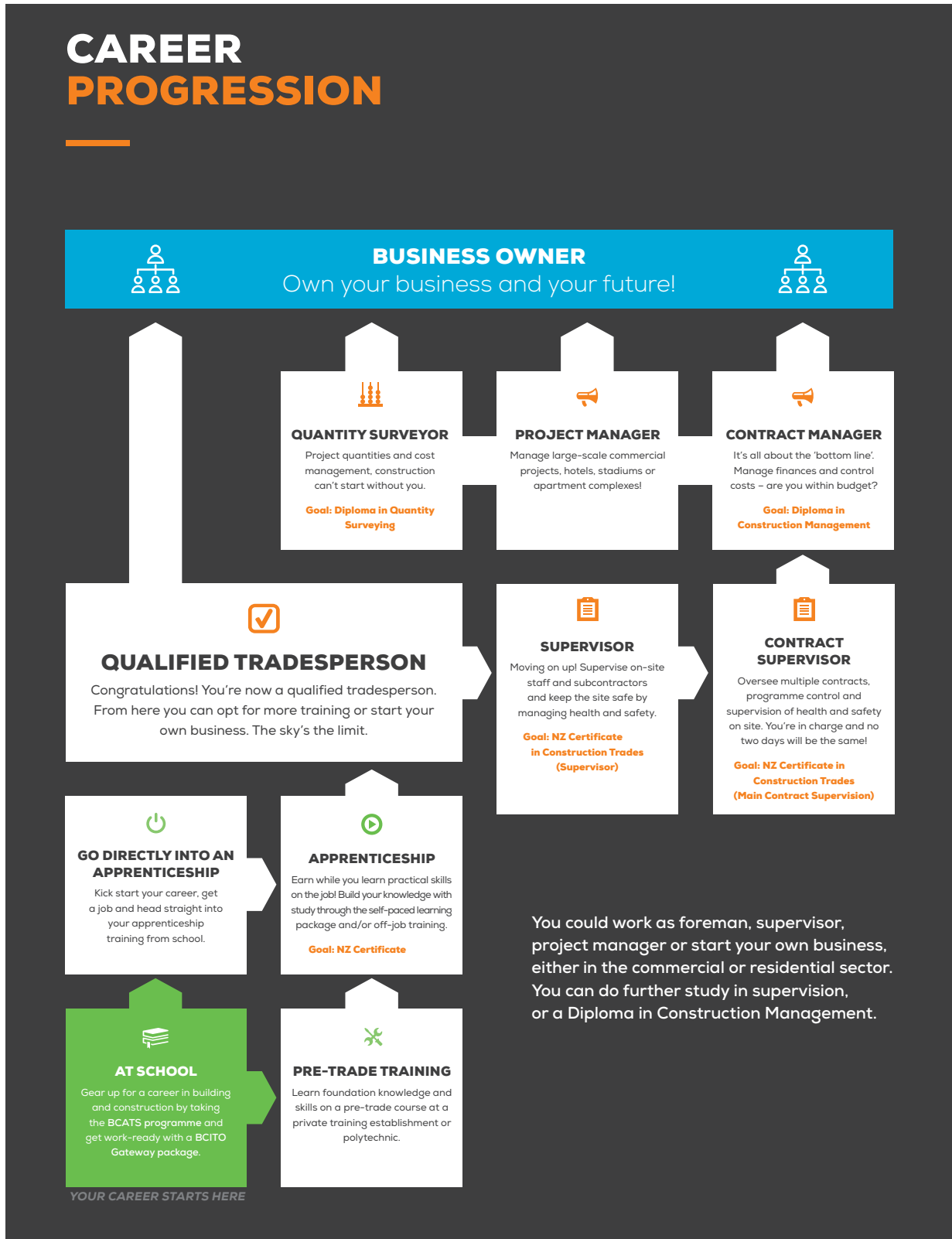
Schools must engage in BCITO moderation.

Certificates

The BCITO will provide a Certificate of Achievement for each student listed on the MoU who successfully achieves all the unit standards in their BCITO Gateway package. The school's Gateway Coordinator will need to liaise with their BCITO Training Advisor to ensure the list of eligible students is correct.

Pathways into industry

The BCITO Gateway packages can be the starting point for an exciting career in the construction industry. Students can register with us at <https://mybcito.nz/s/signup> or through calling 0800 422 486. myBCITO has information to help students prepare for post-school success, including recording projects and gaining recognition for achieving milestones such as drivers licences.



BCITO.org.nz

0800 4BCITO (0800 422 486)